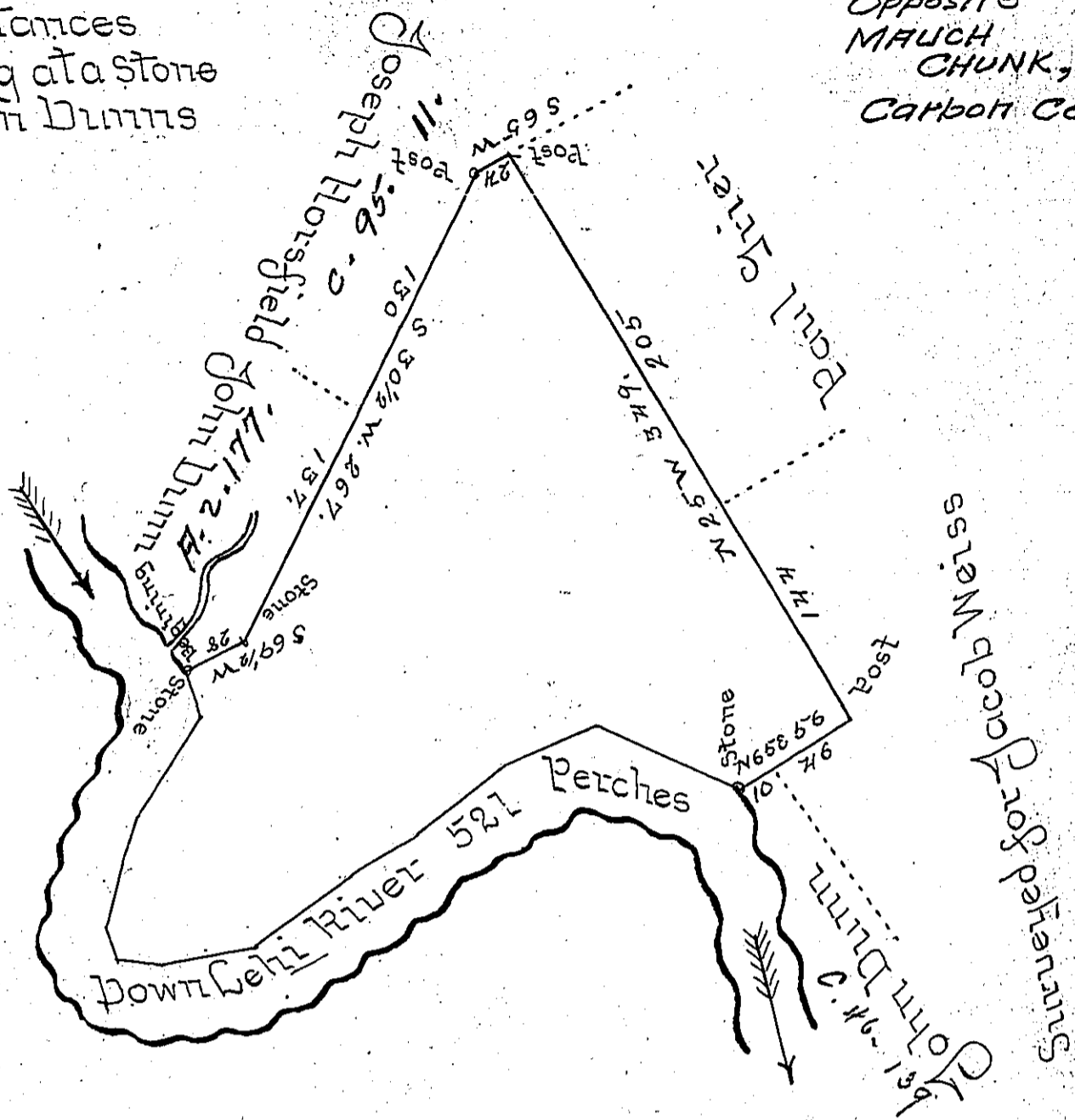


Bearings and distances
down Lehi beginning at a Stone
the Corner of John Dunns

Opposite
MAUCH
CHUNK,
Carbon Co.

S. 10. E.	27.
S. 35. W.	60
S. 25. W.	22
S. 18. W.	35
S. 24. E.	18
S. 73. E.	20
N. 82. E.	46
N. 60. E.	58
N. 62. E.	42
N. 58. E.	58
N. 73. E.	54
S. 60. E.	81
527	



By Virtue of a Warrant dated the 20th March 1793 Surveyed
the 24th June 1794 to Paul Micksh the above described tract
of land situate ^{the East side} on Lehi in the County of Northampton Conta-
ining four hundred and twelve acres Ninety two perches and
the allowance of Six P Cent &c

J. Geo Palmer D.S.

To Daniel Brodhead Esq^r
Surveyor General

IN TESTIMONY that the above is a copy of the original remaining on file in
the Department of Internal Affairs of Pennsylvania, made
conformably to an Act of Assembly approved the 16th day of
February, 1833, I have hereunto set my Hand and caused
the Seal of said Department to be affixed at Harrisburg,
this second day of October 1900.

James W. Fitter
Secretary of Internal Affairs.